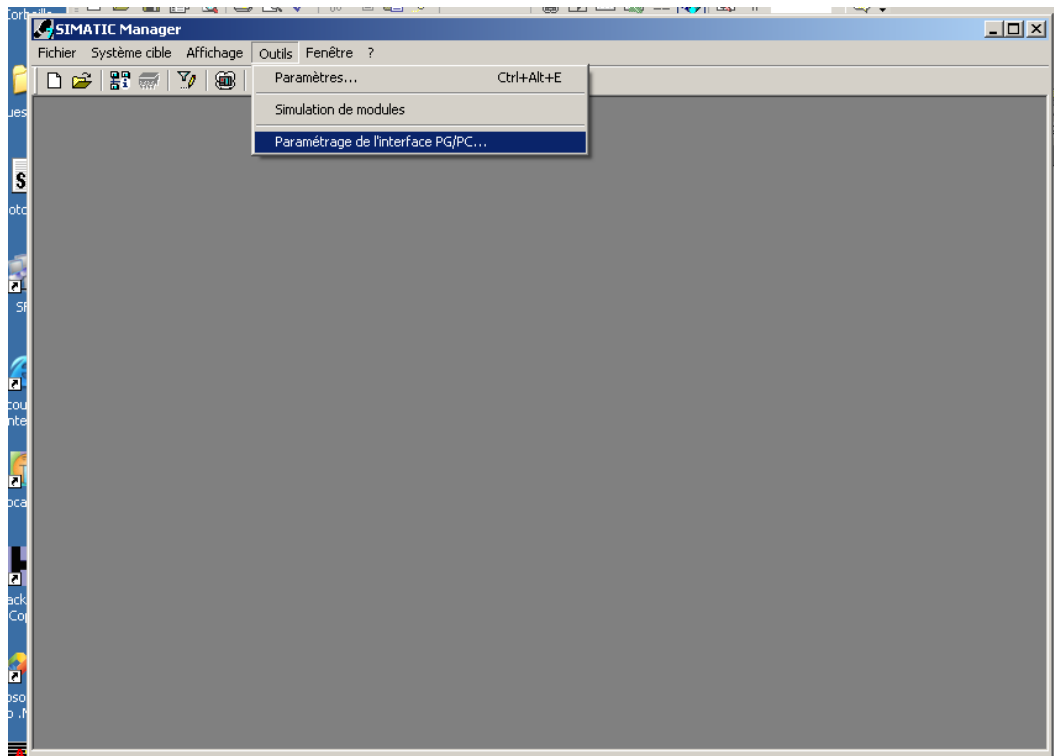
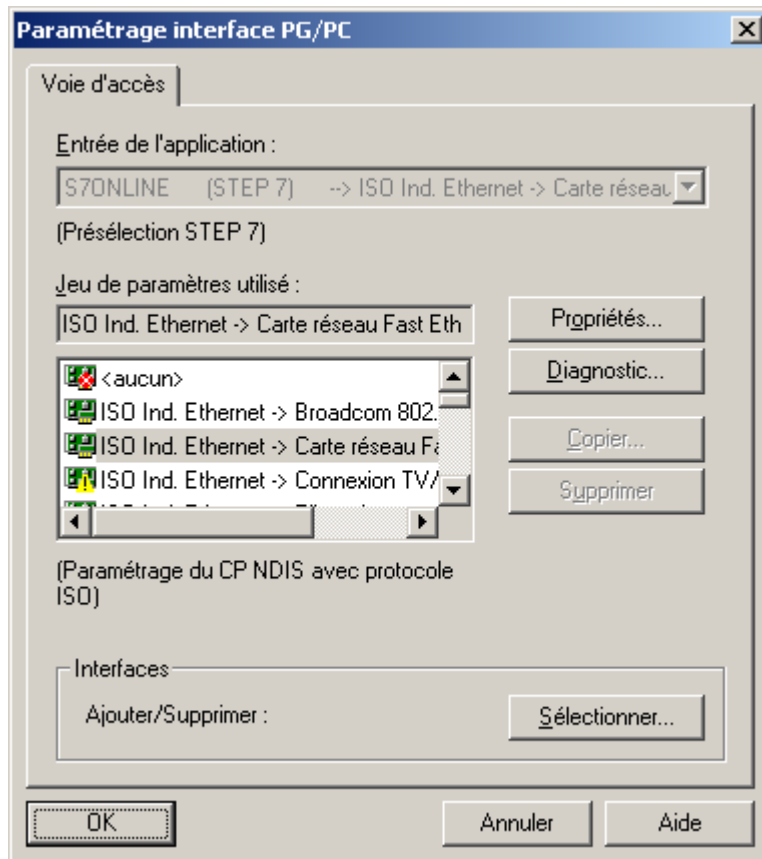


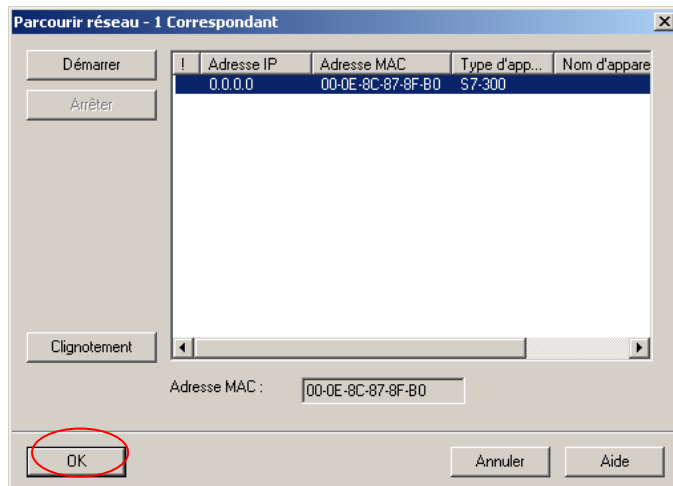
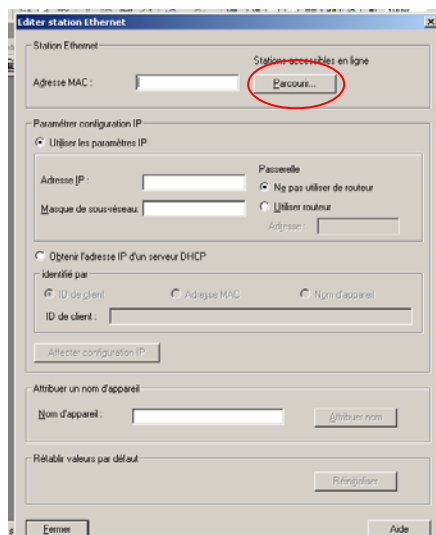
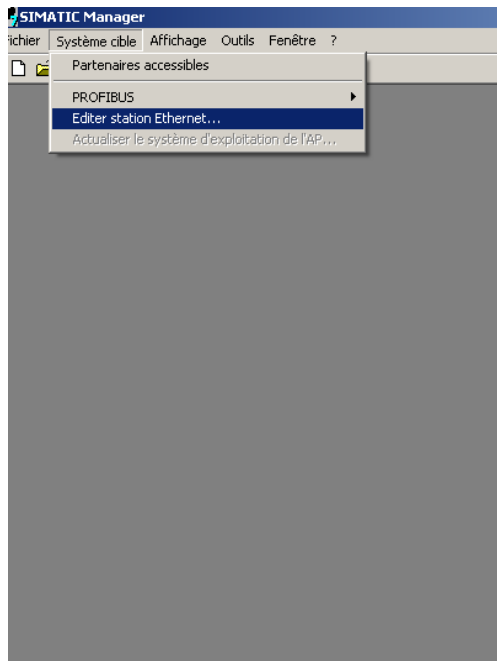
# Connexion entre AUTOMGEN8 et un automate SIEMENS S7-300 par Ethernet.

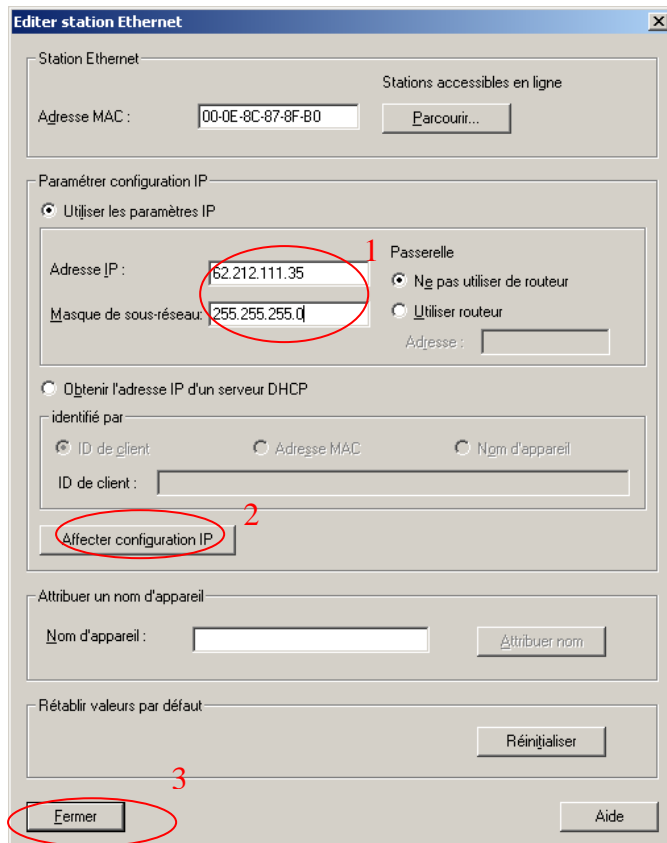
Nécessite le module de communication S7-300 8.001 d'AUTOMGEN.

- 1- associer une adresse IP à l'automate avec le logiciel STEP7 de SIEMENS :









2- paramétrer le module de communication d'AUTOMGEN :

