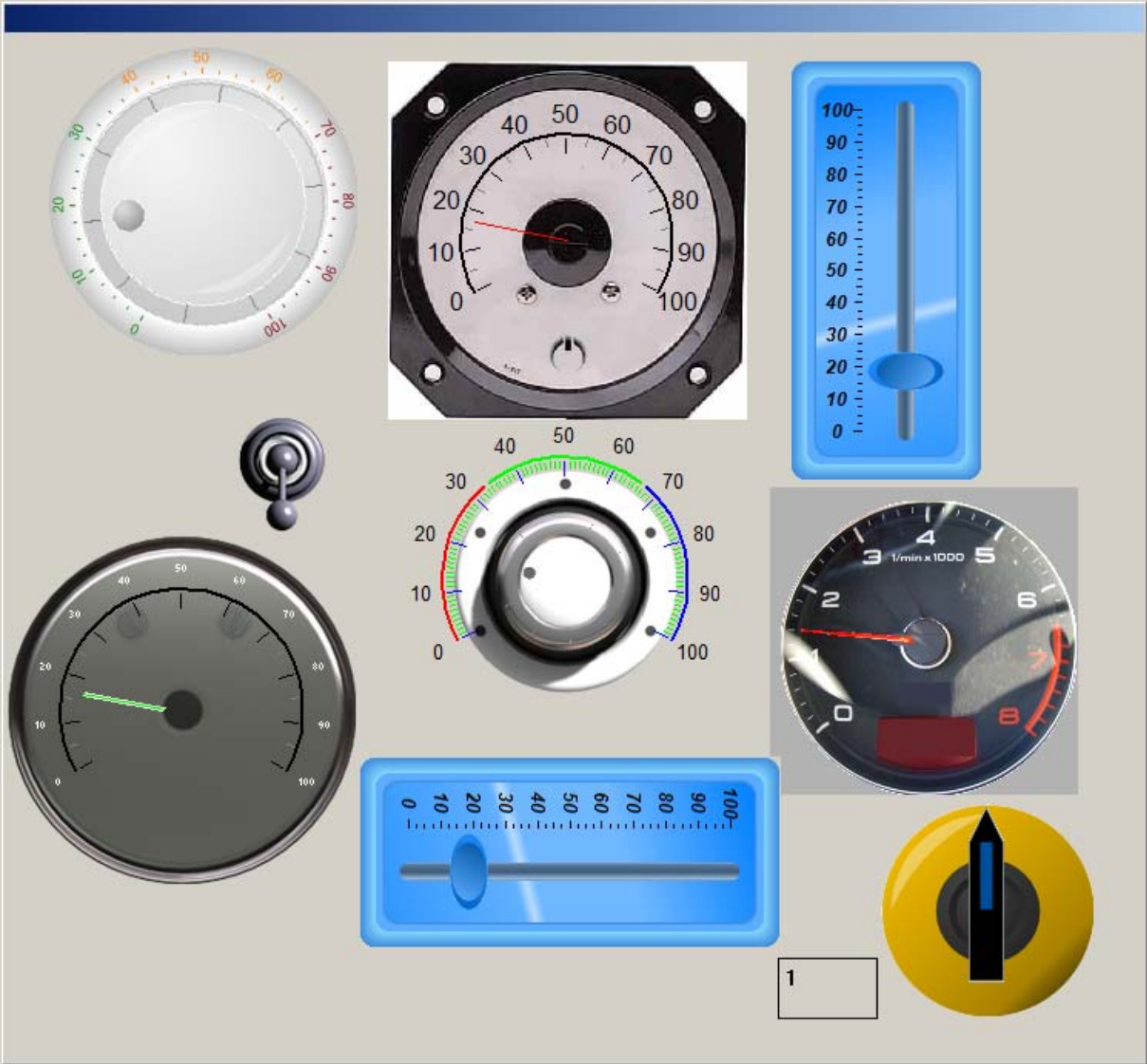


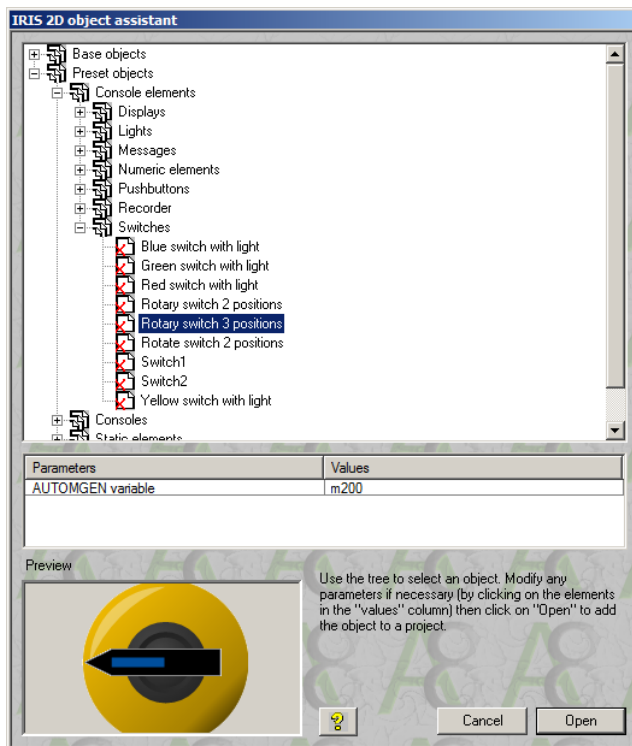
IRIS 2D VALANA OBJECT EXTENSION

AUTOMGEN 8.010

©2008 IRAI

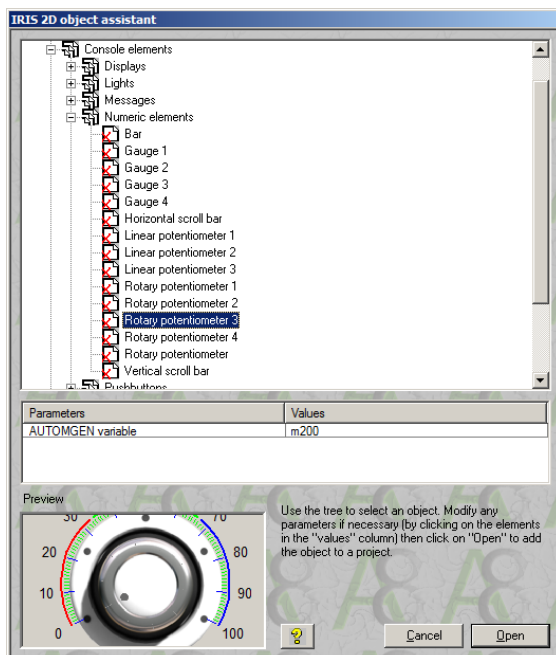


A new sub type « rotary knob » is now available for VALANA IRIS2D object. This new sub type can also be used as rotary switch:



A new « Bitmap » tabulation can be used to select a graphic file which is to be used to draw the object (except for « Scrollbar » sub type).

New preset SCADA objects can be selected:



The new VALANA object functionalities can now be used in WEB SCADA applications. An online sample can be seen at <http://88.191.61.29>, password is « password ». JAVA plug-in (downloadable at www.java.com) must be installed for your web browser.

AUTOMGEN web server - Mozilla Firefox

Fichier Édition Affichage Historique Marque-pages Outils ?

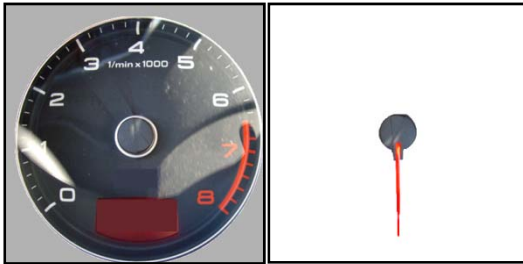
http://88.191.61.29/

Les plus visités Débuter avec Firefox À la une

The image displays a collection of digital gauges and meters. It includes several speedometers with different scales and needle colors (green, red, black). There are also tachometers, one with a red needle and another with a black needle. Additionally, there are two blue vertical sliders and one yellow circular gauge with a black needle. A small box containing the number '0' is located near the bottom right of the gauges.

Applet valana7 started

For designing your own objects with bitmaps, you have to create 2 bitmap files, the first one for background, the second one for moving part. Here is the 2 graphics file for one of the object used in the sample:



Le fichier qui définit la partie mobile (ici l'aiguille) doit porter le même nom que le premier fichier avec le caractère '_' ajouté à la fin du nom, ici : gauge6.bmp et gauge6_.bmp. La couleur blanche est utilisée comme couleur « transparente » pour le fichier contenant la partie mobile.

