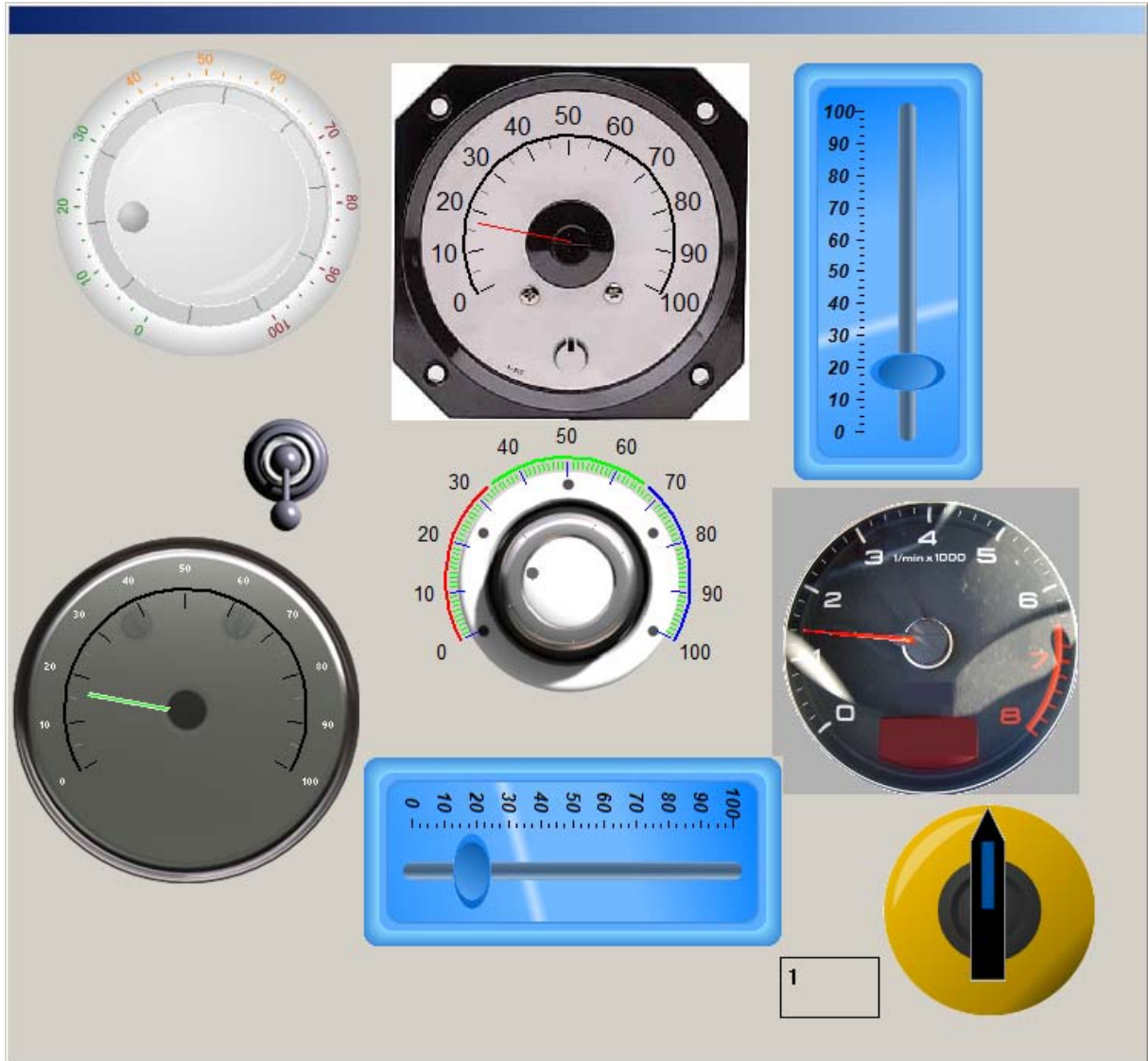


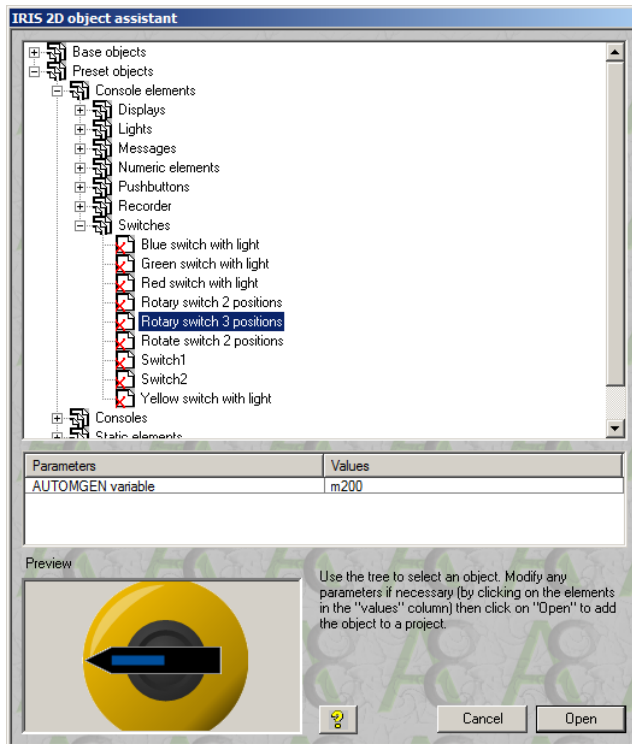
IRIS 2D VALANA OBJECT EXTENSION

AUTOMGEN 8.010

©2008 IRAI

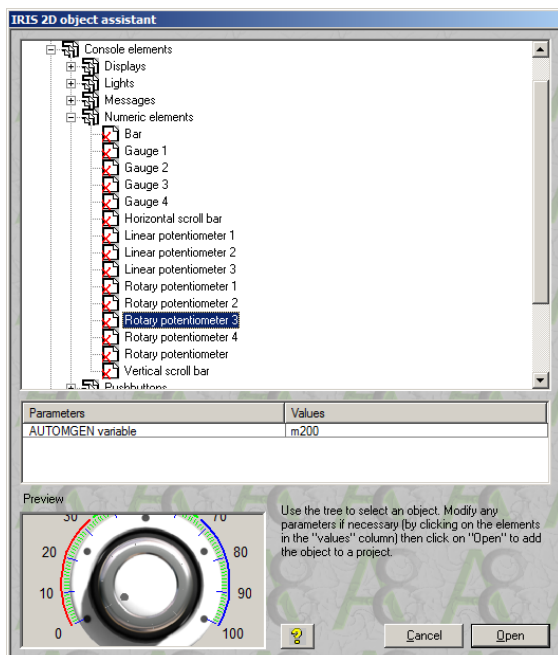


A new sub type « rotary knob » is now available for VALANA IRIS2D object. This new sub type can also be used as rotary switch:



A new « Bitmap » tabulation can be used to select a graphic file which is to be used to draw the object (except for « Scrollbar » sub type).

New preset SCADA objects can be selected:



The new VALANA object functionalities can now be used in WEB SCADA applications. An online sample can be seen at <http://88.191.61.29>, password is « password ». JAVA plug-in (downloadable at www.java.com) must be installed for your web browser.

AUTOMGEN web server - Mozilla Firefox

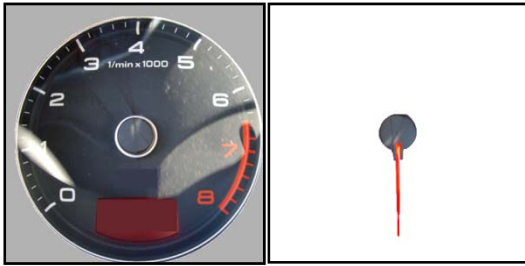
Fichier Édition Affichage Historique Marque-pages Outils ?

http://88.191.61.29/

Les plus visités Débuter avec Firefox À la une

Applet valana7 started

For designing your own objects with bitmaps, you have to create 2 bitmap files, the first one for background, the second one for moving part. Here is the 2 graphics file for one of the object used in the sample:



The file used for the moving part (here the right one), must have the same name that the background file with '_' added at the end of the name. For this sample, gauge6.bmp and gauge6_.bmp are used. The "white" color is used as transparent for the moving part file.

