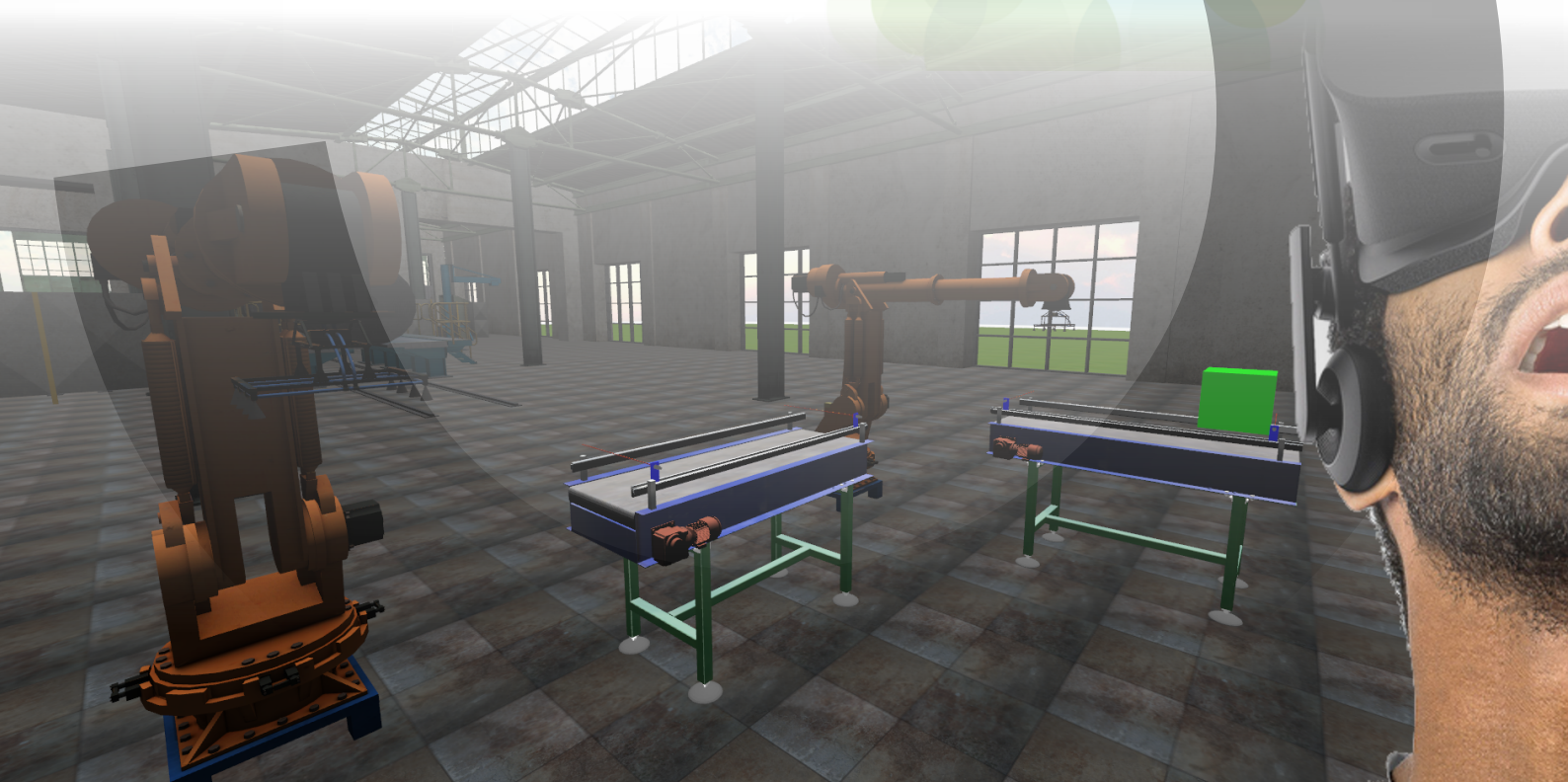
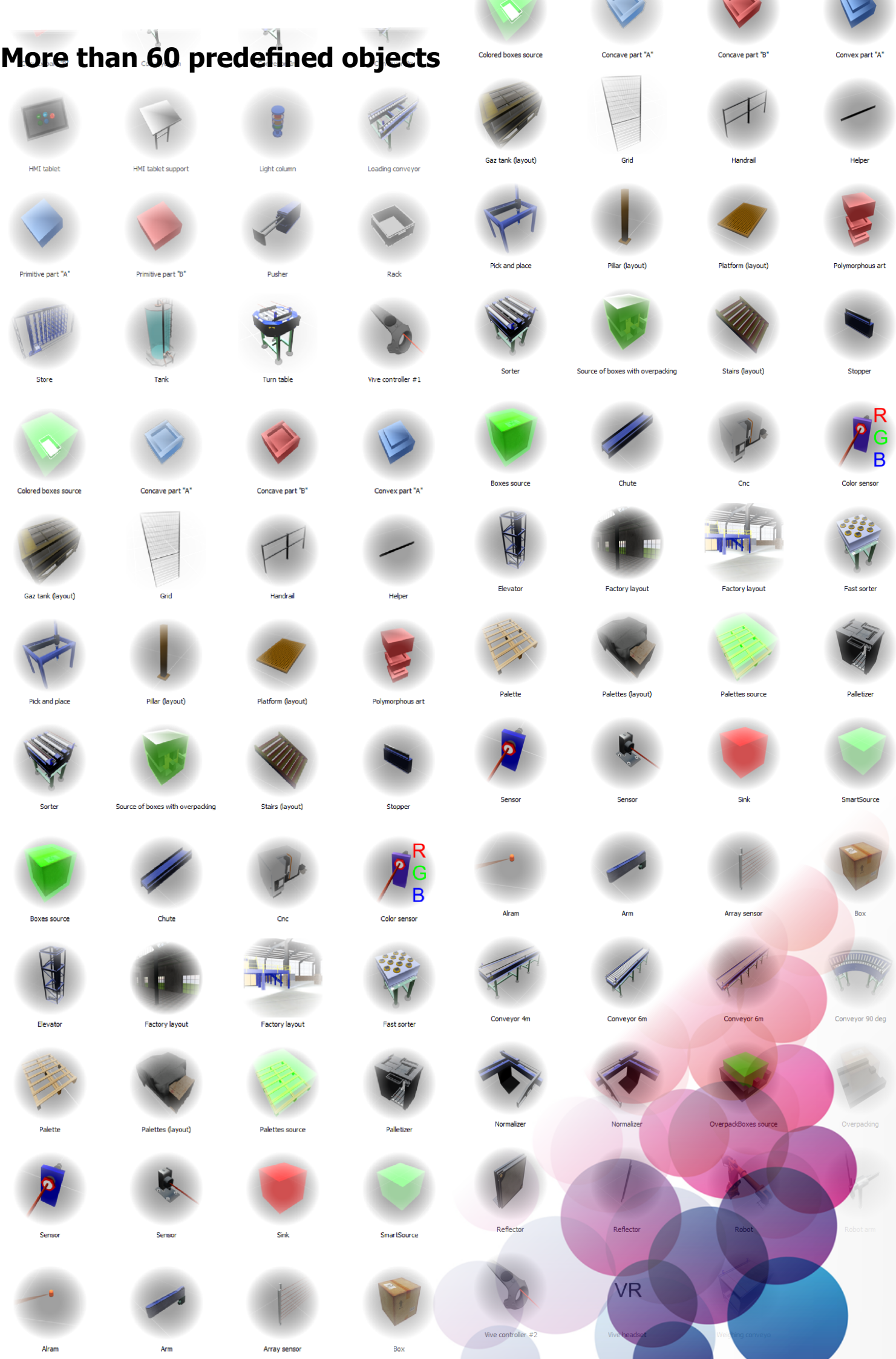


OBJECTS
LIBRARY
FOR
AUTOMATION
SIMULATION

Virtual Universe Pro



More than 60 predefined objects



Drive the simulations with a real PLC*, an automation workshop** or a virtual controller included in Virtual Universe Pro.



Siemens S7 IP, MPI, PPI

Siemens S5

Schneider Electric TSX, SoMachine, Twido

Beckhoff

Mitsubishi

Rockwell Ethernet IP

CodeSys PLCs compatibles

Automgen targets (Eg. Arduino)

Modbus TCP, SLMP, OPC

Siemens PlcSim

Schneider Unity

Schneider SoMachine

Mhj WinSps

CodeSys

Omron Cx-Simulator

Rockwell SoftLogix

Automgen (all compatible targets)

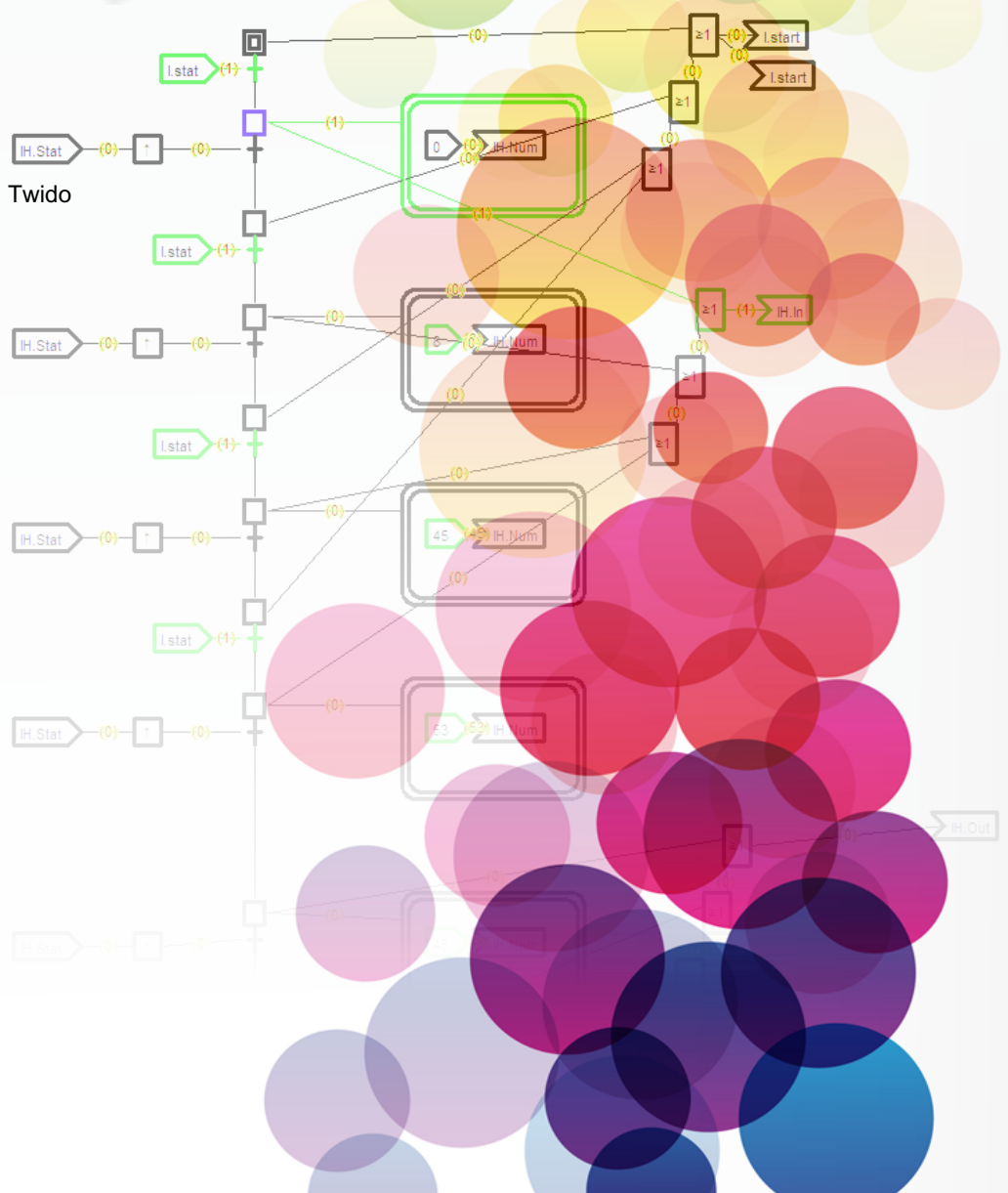
Matlab Simulink

Labview

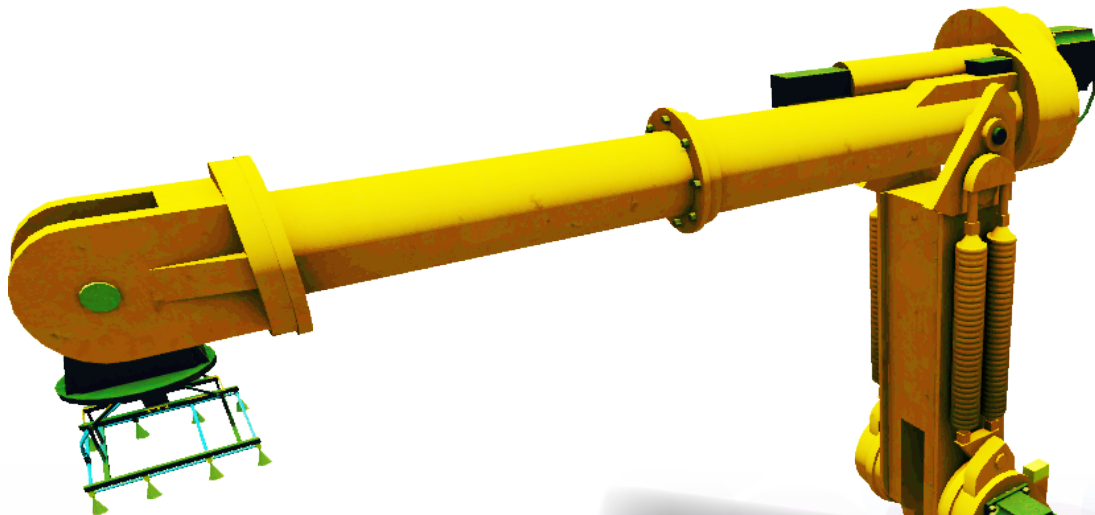
Proteus

all software or programming tools

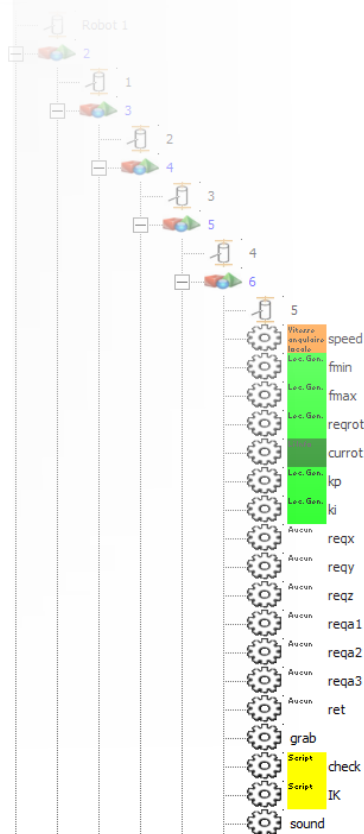
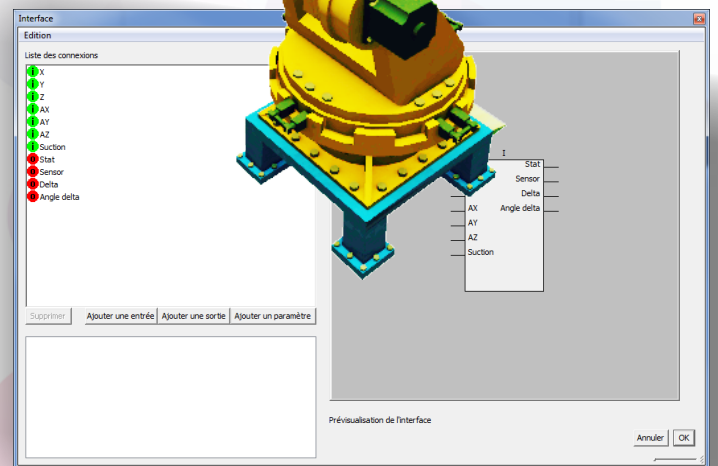
dll, ip, universal memory access



About fifteen ready-to-use examples illustrate the use of the library objects.



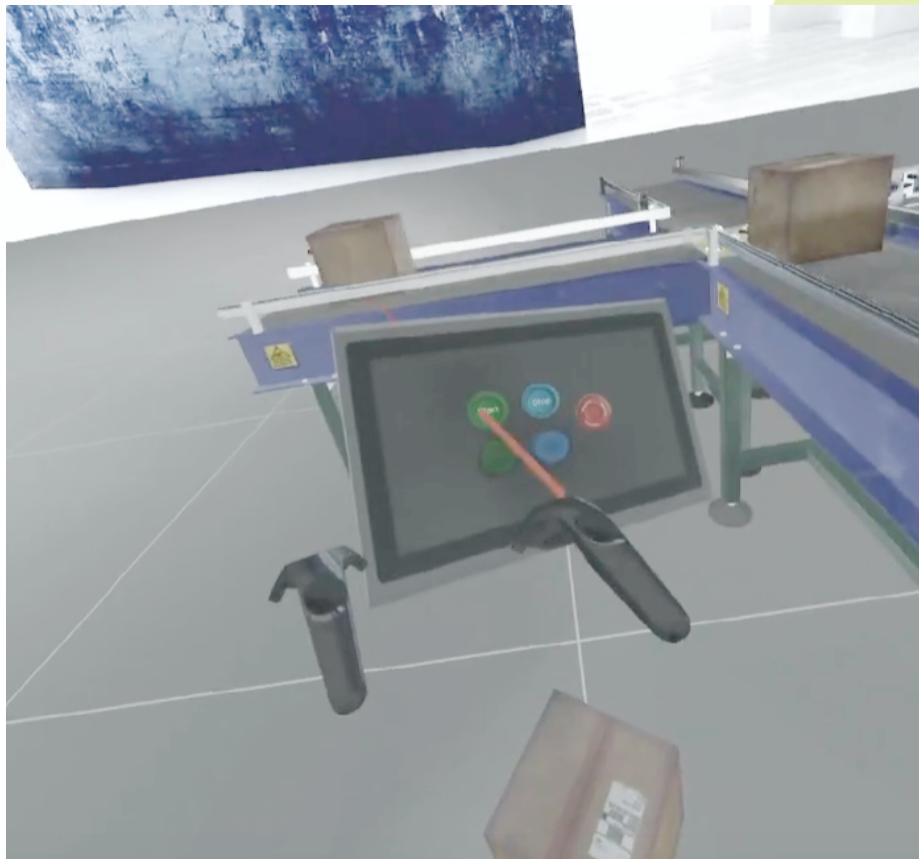
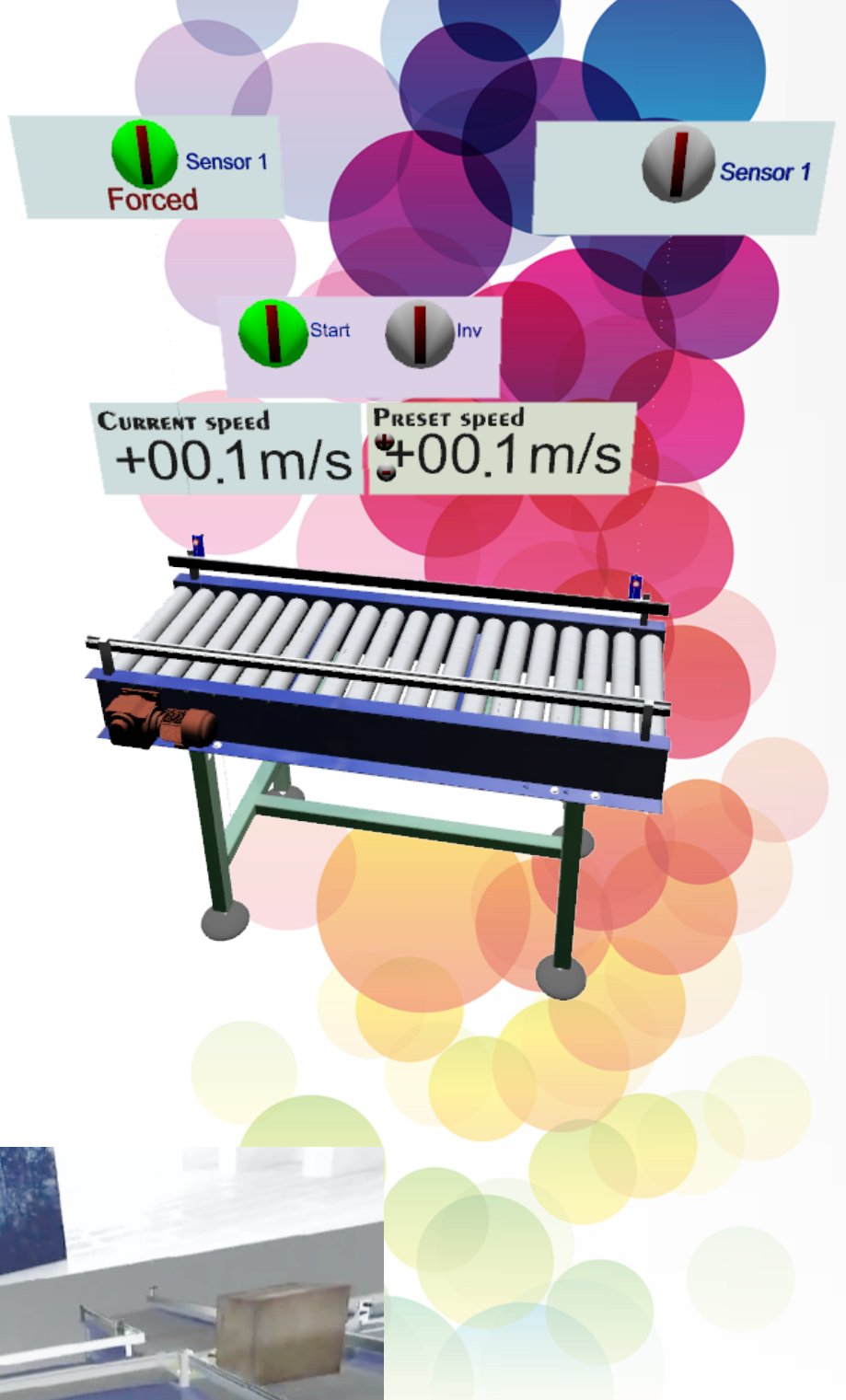
For each object, an optimized interface composed of inputs, outputs and parameters makes it easy to control the object from an automation program.



The configuration of each object is accessible and editable, this allows you to redefine the characteristics of the objects of the library and to understand how to create your own objects. You can also mix library objects with your own creations created from your usual CAD* software.

*import from Solidworks, Catia, Solid Edge, Inventor, etc. is available with the STANDARD and ULTIMATE versions of Virtual Universe Pro

Control panels are used to drive the objects manually and to observe the various associated states. They have the dual purpose of being able to test the functioning of the objects before realizing the program that will use them and also to simulate failures.



All the library objects are compatible with the use of a virtual reality headset. The controllers associated with the vr headset allow a full immersion and interaction.